

# HOME & GARDEN

## 2009



### INSIDE:

- SHOW STOPPING HOME p.35
- SHOE STRING STYLING p.38
- ENERGY SUCKERS p.41
- BLADE SAVERS p.42
- EEK! A SPIDER p.43
- BEFORE & AFTER p.44

Independent / James J. Mackin

May 20, 2009

Home and Garden Supplement 2009

B-35



The house is modern yet pays homage to a classic farmhouse; (bottom) Exposed parallam PSL beams are featured in the open downstairs living area.

Independent / James J. Mackin Photos

## An East Hampton Show Stopper

By Rick Murphy

Transforming a modest home into a sustainable family compound was a daunting task, especially doing it on a constrained small lot on one of the quiet streets off East Hampton's Newtown Lane.

"It was one of the oldest on the block," said Nick Martin, a principal of Martin Architects PC in East Hampton. Built in the early 1900s by a "Bonacker Family" – local jargon for the "finest kind" of neighbor, it was modest and unassuming. The previous owner, in fact, would drape deer he hunted on the back fence to drain, and butcher the carcass in the back shed.

Two sisters who bought the property wanted to redo it as a summer house for their extended families.

"It was a bit of a competition to get the job," Martin recalled. The sisters wanted a "green" home but "they also wanted a modern house, but at the same time traditional."

As it turns out, Martin hit a home run, a house so stunning passing motorists slow to a stop to admire it. The material palette consists of subtle and warm natural tones including stained cedar shingles, ipe plank, and light-hued stucco, bluestone and copper.

"We tore down the original and rebuilt it in a sustainable way," Martin said. The earthy palette manages to cast a farmhouse hue on the thoroughly modern structure.

Sustainable features include high efficiency re-circulating boiler, compos-

ite precut laminated lumber to reduce waste, high R value insulation, low E glass with Argon, low VOC paint and Energy Star appliances.

He rotated the entrance from the south side to the west side and laid

bluestone to complement the hue of the house.

"The design objective was to create a warm modern aesthetic within the vernacular of the Hampton shingle," according to Martin.

The lot, only one-quarter acre, houses a shed, pool house, and swimming pool, and each share architectural detail with the main structure. Inside the 2850 square-foot house, custom cabinets in

Continued on page 45.



May 20, 2009

Home and Garden Supplement 2009

B-45

### Style

Continued from page B-35.

Big box stores may spark an outcry when proposed in the bucolic communities of the East End. But when they're built and open for business, there's no denying that big box bargains simply can't be beat. Why pay hundreds – even thousands – for basic necessities such as bath and kitchen gadgets that can be

purchased for a paltry sum?

Outlet centers, all in fierce competition for survival, offer huge discount days, when already low prices on designer goods are slashed beyond compare. An entire set of top-of-the-line luggage went for under \$30 on a recent deep discount day. Keep your eyes open – and be willing to drop everything and head out for a one day sale, when the bargains are bountiful.

But, while trying to furnish or deco-

rate a room on a shoestring, remember that it's often one key piece – a cornerstone of the space – that catches the eye or makes a statement. So, if you've spent under \$900 and furnished an entire sun porch, splurge on that one pricey piece of artwork or indulge in a fine wine – certain things only appreciate in value, and it's important to savor the sumptuous tastes and experiences that make the East End truly the most enviable place on earth to live. Indulge

on one extravagant item; make it the focal piece of the space – and no one will notice the shabby chic thrift shop finds in every corner.

And, when all is said and done, remember to allow for light and air in your living space. No purchase – whether spendy or simple – can decorate your home more beautifully than the natural light and landscape of the Hamptons that surround us.

ljfnn@indyeastend.com



### Show Stopper

Continued from page B-35.

the kitchen – finished off with layers of Mercedes Benz paint, set off a gleaming white counter made of Caesarstone quartz.

There is a built-in high definition TV and a fireplace that burns both wood and gas in the free flowing living room, which is open to the kitchen and dining area. Though close to a busy street, the

house is quiet thanks to staggered studs and special insulation that muffle the sound. There are two bedrooms downstairs and a light filled bedroom in the basement.

The master bathroom includes double custom vanities with makeup vanity in the center. Materials include recycled content tile flooring, custom mahogany vanities with Corian countertop, recycled content wall tile, and custom tub and shower surround. There is generous closet space, and even a secret door that leads to the air conditioning unit. The house was built by Reinhardt/O'Brien Contracting.

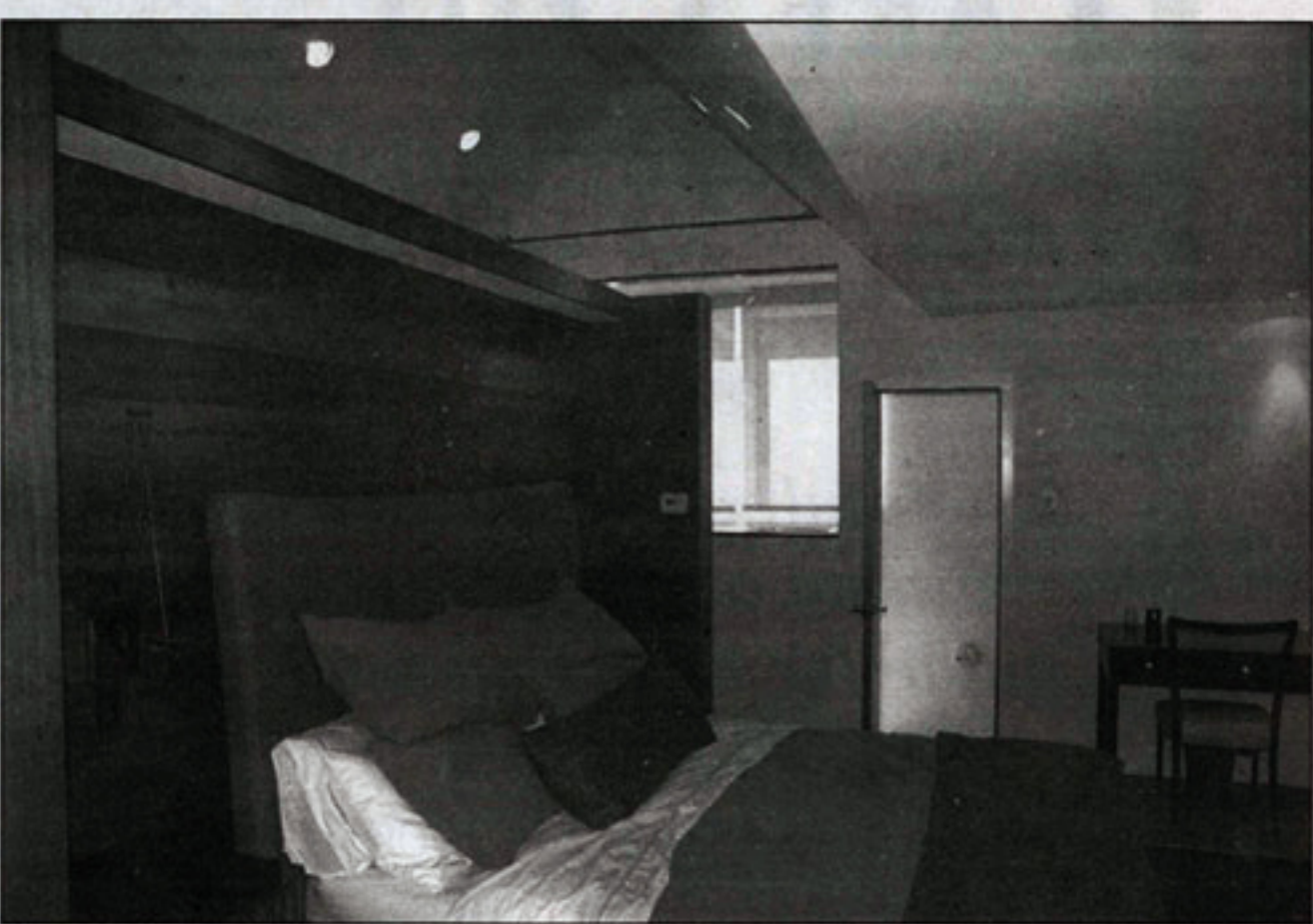
The mahogany tongue and groove headboard acts as a dividing element in the bedroom/bathroom space while keeping the master suite open and light.

Martin has a background that in-

cludes work experience with such notable firms as Gwathmey Siegel & Associates Architects, Zapata and Wood and Stelle Architects and he have

emerged as one of the East End's most innovative and earth-friendly architects. To view his current projects go to [www.martinarchitects.com](http://www.martinarchitects.com)

The upstairs master features a mahogany center match headboard and custom showers and vanities in the bathroom. (bottom left) A media credenza made of mahogany and blackened steel in the living area designed by the architect.



## Green Season Landscaping

Complete Property Care

Family Operated

Whatever Your Landscaping Needs!  
Lawn Mowing & Maintenance  
Fertilizing

Phone: 631.259.2832  
[greenseasonlandscaping@live.com](mailto:greenseasonlandscaping@live.com)

